

# **INTERLUX - Hörsching** **Case study**

## **Exhaust Air Purification and** **Odor Elimination**

### **Spray Tunnel** **FERCHER System** **FERNETT'S European Partner**

**Photo:**

The spray tunnel is mounted above the computer room. On the left, exhaust air is fed in from the CNC machine.

Exhaust air amount:  
ca. 3,000-4,000 m<sup>3</sup>/h -  
105,943-141,258 ft<sup>3</sup>/h



**Photo:**

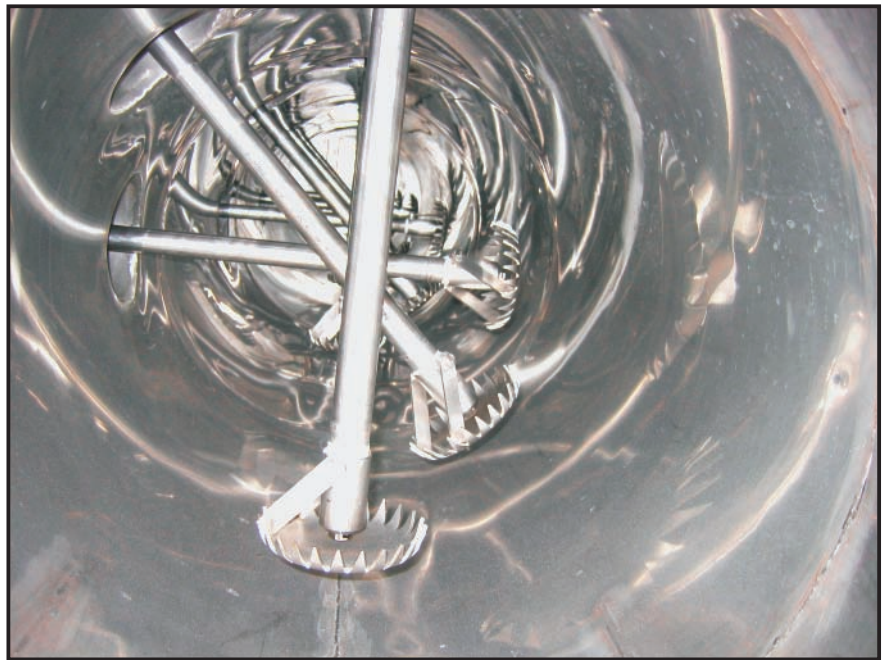
The photo shows the Fercher Spray Tunnel. The distribution pipe is located on the left, which leads the spray water to the individual spray nozzles.



**Photo:**

The inside of the spray tunnel before its first operation.

Our proprietary spray nozzle system allows for an optimal spray out of the heavily odor polluted exhaust air. The exhaust air leaves the factory completely purified.



**Photo:**

Sprayed water from the spray tunnel is collected in the spray water basin. Float switches ensure a back feed when necessary or a continuous back feed thus enabling dirt to flow off into the sewer on the water surface.

